

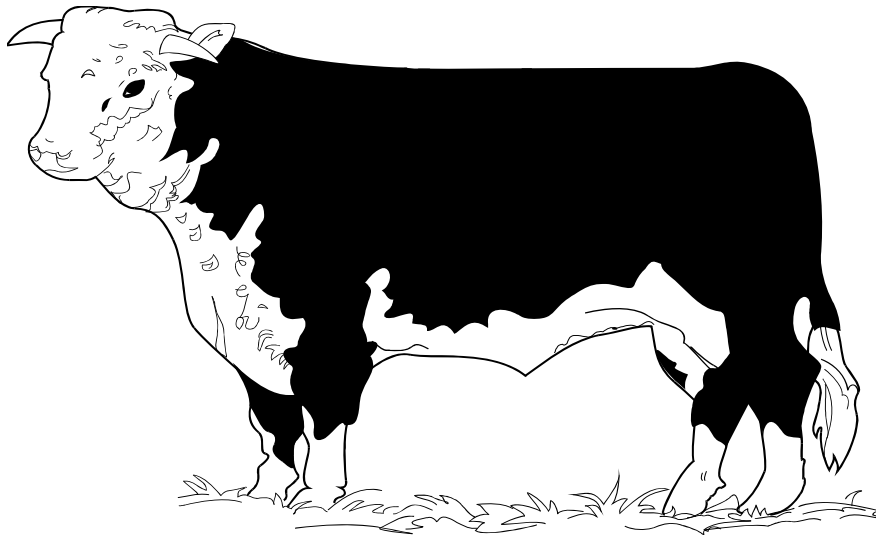
HOWARD COUNTY

4-H BEEF PROJECT

RECORD BOOK

Level 3 (grades 9-12)

Record Book to be turned in at check-in.



NAME: _____ GRADE _____

CLUB _____

PROJECT HELPER SIGNATURE: _____ DATE _____

It is the policy of the Purdue University Cooperative Extension Service that all persons have equal opportunity and access to its educational programs, services, activities, and facilities without regard to race, religion, color, sex, age, national origin or ancestry, marital status, parental status, sexual orientation, disability or status as a veteran. Purdue University is an Affirmative Action institution. This material maybe available in alternative formats.

2008

Revised 3/2000

Adopted from Cass County 2002

GENERAL GUIDELINES:

For each year you are enrolled in the Beef project, complete two (2) of the activities included in the record book. **You may not repeat activities.** In addition, for each year you are enrolled in the Beef project, complete the feed and financial report included in this record book. **Use your 4-H Beef Resource Handbook.**

ACTIVITY 1—BEEF CATTLE FRAME SCORES

An important selection tool for beef cattle is the ability to calculate frame scores. Using the charts on pages 2-16 to 2-17 in your Beef Resource Handbook, calculate the frame score for one of your project animals.

<u>Age (in months)</u>	<u>Height (in inches)</u>	<u>Frame Score</u>
_____	_____	_____

ACTIVITY 2—HEALTH REQUIREMENTS

As you ready your beef animal to exhibit at the county fair, it is important to be aware of the health requirements for exhibition in Indiana. What are the health/vaccination requirements for your animal to be eligible to show at the county fair?

Steer _____ Heifer _____

ACTIVITY 5—BEEF YIELD GRADES

When selling your market animals, buyers pay a great deal of attention to both yield and quality grades. Discuss what yield grades mean and why this is important to a buyer.

ACTIVITY 6—RETAIL BEEF PRICES

Select four cuts of meat from the chart on page CP-15 in Beef Resource Handbook. The next time you are at the grocery store, find the price per pound for each of those cuts.

<u>Cut</u>	<u>Price (\$/lb.)</u>
1. _____	_____
2. _____	_____
3. _____	_____
4. _____	_____

ACTIVITY 7—PROMOTING YOUR PRODUCT

If you were at a livestock show, and someone approached you and said that they heard that beef cattle were full of drugs and weren't a safe product for consumers, how would you respond?

ACTIVITY 8—PROMOTING YOUR INDUSTRY

If you were at a livestock show and someone approached you and told you that they had heard from animal rights activists that beef cattle were treated inhumanely, how would you respond?

ACTIVITY 9—ETHICS IN SHOWING

List four unethical practices regarding beef show cattle and why you feel they are wrong.

<u>Practice</u>	<u>Why it is wrong</u>
1. _____	_____ _____
2. _____	_____ _____
3. _____	_____ _____
4. _____	_____ _____

RECORD SUMMARY

EXPENSES OF 4-H BEEF PROJECT

COST

Cost of Animal (s)	_____
Total Feed Cost	_____
Vet/Medical Fees	_____
Bedding Fees	_____
Manure Handling	_____
Transportation Fees	_____
Show Equipment Costs	_____
Fencing & Housing/Building Costs	_____
Interest on Money to buy beef (if any)	_____
Other	_____

RECEIPTS OF 4-H BEEF PROJECT

INCOME

Selling of Beef Animal (s) (actual or estimated projected)	_____
Other Income from project	_____

ACTUAL OR PROJECTED INCOME OR LOSS

FEED RECORD

Number of days animals were fed	_____
Total Pounds of feed fed to animals	_____
Total Costs of feed	_____

LABOR

Number of hours per week spent on 4-H Beef project. _____
(This includes feeding, grooming, general care, exercising and getting ready for fair)

Total hours spent on 4-H Beef project from beginning of project until the fair.
